





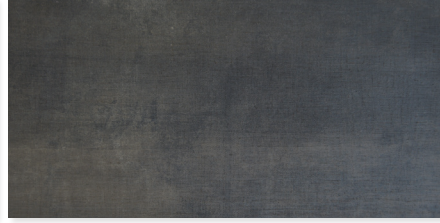
Product Featured: BLOCK White Rectified 12"x24" Lappato - BLOCK Dark Rectified 12"x24" Lappato

The Loft Collection offers five in stock color options with a beautiful lappato finish. This urban chic collection is suitable for wall or floor applications that can be placed in any living quarters. Available in more sizes and finishes through special order.

## Floor / Wall Tiles



WIS11991  
BLOCK Wood Rectified  
12"x24" Lappato



WIS11987  
BLOCK Dark Rectified  
12"x24" Lappato



WIS11988  
BLOCK Grey Rectified  
12"x24" Lappato



WIS11990  
BLOCK White Rectified  
12"x24" Lappato



WIS11989  
BLOCK Rust Rectified  
12"x24" Lappato

## Technical Information

TECHNICAL CHARACTERISTICS	ASTM Test	INDUSTRY STANDARDS	RESULTS
Water Absorption	C373	Impervious <0.5%	≤ 0.1%
Thickness Dimension	C499	Range ±0.04in Max.	≤ ±0.04 in
Facial Dimension	C499	±0.25%	≤ ±0.25%
Warpage Average	C485	± 0.40% on any edge	≤ ± 0.40%
Warpage Average	C485	± 0.40% on diagonal	≤ ± 0.40%
Wedging Average	C502	± 0.25%	≤ ± 0.25%
Bond Strength	C482	≥ 50 psi	≥ 200 psi
Breaking Strength	C648	≥ 250 lbf	≥ 400 lbf
Hardness (Mohs)	Scratch Test (No regulated)	Range 0 - 10	≥ 7
Visible Abrasion Resistance for Glaze Tile	C1027	No requirement Range 0 - 5	Class 4
Frost Resistance (Freeze/Thaw)	C1026	No sample must show alterations to surface	No evidence of damage
Chemical Resistance	C650	No Requirement Range E - A	Class A
Stain Resistance	C1378	No Requirement Range E - A	Class A*
Coefficient of Friction (Dynamic)	DCOF Acutest <sup>sm</sup> (wet)	≥ 0.42	≥ 0.55*
Aesthetic Classification	Visual Evaluation Shade & Texture	No Requirement Range V0 - V4	V2

\*All values given are for matte or honed material. No values are given for polished material. Polished surfaces are not recommended in area subject to exposure from grease, oil or water.



# COUNTRY FLOORS®

## NEW YORK

15 East 16th Street New York, NY 10003

P : (212) 627 8300 F : (212) 242 1604

## LOS ANGELES

8735 Melrose Avenue Los Angeles, CA 90069

P : (310) 657 0510

## SAN FRANCISCO

2 Henry Adams St. – Suite 100 San Francisco, CA 94103

P : (415) 241 0500 F : (415) 241 0600

## FAIRFAX

2737 Dorr Avenue Fairfax, VA 22031

P : (703) 204 1818 F : (703) 204 1888

## POMPANO BEACH

2010 West Atlantic Blvd. Pompano Beach, FL 33069

P : (954) 979 9530 F : (954) 979 9531

## MIAMI

2920 NW 79th Avenue Doral, FL 33122

P : (305) 463 9850 F : (305) 463 9851

## BETHESDA

6931 Arlington Rd Suite C2, Bethesda, MD 20814

P : (301) 913 9113

## ANAHEIM

2111 E Howell Ave, Anaheim, CA 92806

P : (714) 525 8910 F : (714) 525 8911

## NEW JERSEY

610 Washington Ave Carlstadt, NJ 07072

P : (201)507 0111 F : (201) 507 0888

## PUERTO RICO

279 José De Diego Ave. San Juan, PR 00920

P : (787) 793 5642 F : (787) 774 8238

## DOMINICAN REPUBLIC

Calle Dr Manuel Emilio Perdomo #33, local 3 Ensanche Naco Santo Domingo, República Dominicana

P : (809) 692 2391

[countryfloors.com](http://countryfloors.com)