



## PEDRALBES™

Country Floors proudly introduces Pedrables, inspired by the beautiful terra cotta floors from a 14th century monastery in Barcelona.

Each tile is made according to centuries old traditional methods with carefully selected clays to ensure an incredibly reliable, high quality terracotta.

Available in two standard colors and 5 special colors. Choose between Original Hand Smooth or Vintage texture and Waxed or Matte finishes. Countless sizes, shapes; decorative patterns; borders and trims to create your own unique space.



## 4 X 4" DECORATIVE TILES



WT110135 Handpainted Deco 06  
4x4" Classic Blue Glaze  
Golden White/Waxed Finish  
GC-06-BL



WT110136 Floral Outline  
Deco 110 4x4"  
Antique White/Waxed Finish  
EL-110-AW



WT110137 Handpainted Medieval  
Scroll Deco 08 Satin Black Glaze  
Traditional/Waxed Finish  
GS-08-SB-TR



WT110138 Handpainted Deco  
Basilica 02 4x4" Antique White  
Glaze Old World/Waxed Finish  
GB-02-AW-OW



WT110139 Handpainted Deco 02  
4x4" Antique White Glaze  
Traditional/Waxed Finish  
GC-02-AW-TR



WT110068 Medieval Outline  
Deco 580 4x4"  
Golden White/Waxed Finish  
EE-580-GW



WT110140 Flower Branch,  
Handpainted Deco 07 4x4"  
Traditional Waxed Finish,  
GF-07-NT-TR

### USAGE

The waxed finish is intended for INTERIOR use only. It is finished with our natural paste wax and applied by hand to each tile to achieve a beautiful and natural low gloss patina. A final coat of wax is required after installation to achieve the final desired look. The wax will also repair most scratches and can be used to maintain and repair the tile surface over time. Pedrables Antique Terracotta is hand made with some imperfections which are intended and inherent with this type of tile.



FEATURED IMAGE: PEDRALBES PICKET 3X5X5/8" OHS/STANDARD COLOR TRADITIONAL/WAXED FINISH WT110039  
PEDRALBES 2X2" ENGRAVED DECO SMALL DOT CARBON BLACK/WAXED FINISH EE-58-CB WT110144





## 2 X 2" SMALL DOTS



WTI10141  
Engraved Deco Small Dots  
Traditional/Waxed Finish  
EE-30-TR



WTI10142  
Embossed Deco Small Dots  
Carbon Black/Waxed Finish  
EE-33-CB



WTI10144  
Embossed Deco Small Dot  
Carbon Black/Waxed Finish  
EE-58-CB

FEATURED IMAGE: 3X7X 5/8" ROPE BORDER, OHS/SPECIAL COLOR-ANTIQUE WHITE/WAXED FINISH  
4X8X 5/8" ROPE RIGHT, VTG/STANDARD COLOR-OLD WORLD/WAXED FINISH  
4X8X 5/8" ROPE LEFT, VTG/STANDARD COLOR-OLD WORLD/WAXED FINISH



WTI10145  
6" Handpainted Medieval  
Scroll Deco 08, Satin Black  
Glaze, Traditional/Waxed Fin.  
GS-08-SB-TR



WTI10146  
5" Handpainted Treboles Deco 04  
Antique White Glaze  
Traditional/Waxed Finish  
GT-04-AW-TR



WTI10147  
5" Handpainted Treboles Deco 07  
Antique White Glaze  
Traditional/Waxed Finish  
GT-07-AW-TR

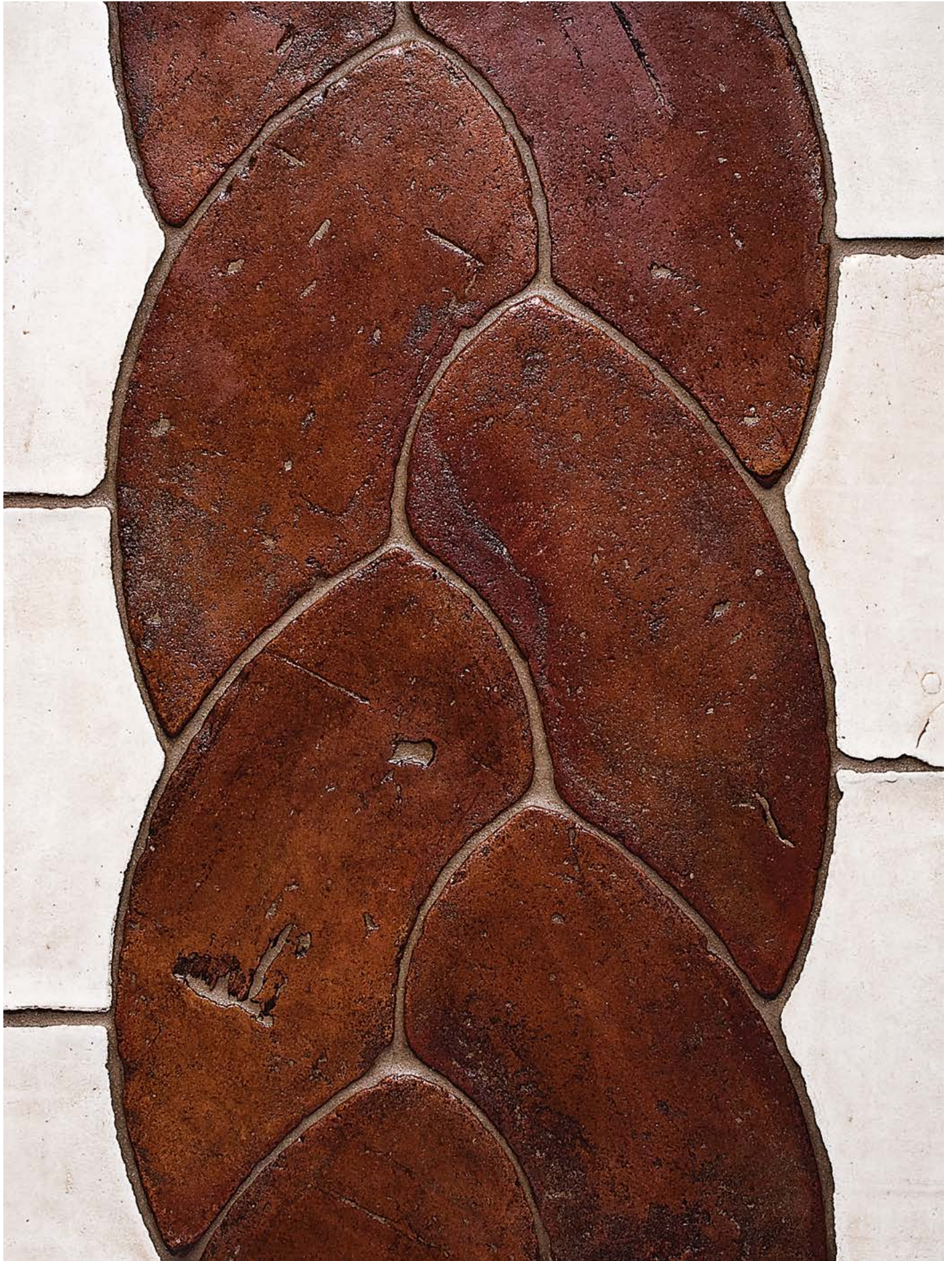


WTI10149  
6" Handpainted Basilica Deco 11  
Antique White Glaze  
Traditional/Waxed Finish  
GB-11-AW-TR



WTI10153  
6" Handpainted Basilica Deco 03  
Antique White Glaze  
Traditional/Waxed Finish  
GB-03-AW







## DECORATIVE TILES



WT110150  
12" Engraved Medieval Deco 55  
Old World/Waxed Finish  
EE-55-OW



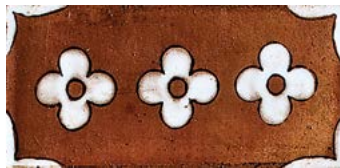
WT110091  
6" Floral Wall Paper Deco 40  
Antique White/Waxed Finish  
EL-40-AW



WT110151  
6" Handpainted Basilica Deco 02  
Ochre on Old World/Waxed Finish  
GB-02-OC-OW



WT110098  
6" Medieval Outline Deco 480  
Antique White/Waxed Finish  
EE-480-AW



WT110152  
2 1/2 x 5" Glazed Deco Treboles Bdr 14  
Antique White Glaze  
Traditional/Waxed Finish  
GT-14-AW-TR

## MOULDINGS



WT110111  
Pedralbes OG Molding 1 3/4"x8"  
Standard Color Old World/Waxed  
Finish

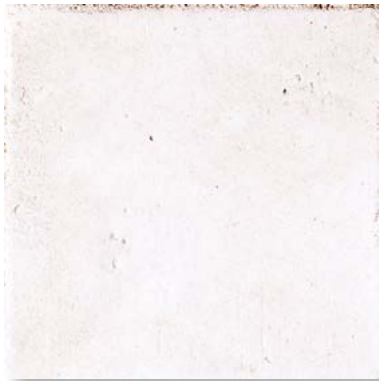


WT110108  
Pedralbes Cr Molding 1x8" Special  
Color  
Antique White/Waxed Finish



WT110116  
Pedralbes PL Molding 5/8x8" Special  
Color/OHS  
Antique White/Waxed Finish

## AVAILABLE COLORS



Antique White



Carbon Black



Dirty White



Golden White



Old World

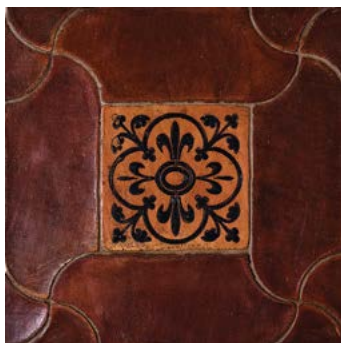


Traditional

## INSTALLATION

1. Remove tile from several boxes at a time to blend color variation between different boxes.
2. DO NOT USE any sealers before installing or grouting the pre-waxed Pedrables tiles.
3. It is recommended to install these tiles using the Thin Set Method and thickest option.
4. Back buttering of the tile with thin set cement is recommended to help compensate for thickness variation.
5. Install tile normally, according to ANSI specifications or other local required standards.

# PEDRALBES CONCEPTS



WTI10043  
Cordoba Stripe, 4 x10"  
OHS-Old World/Waxed Finish



WTI10070  
Star and Cross, 4 x4"  
OHS-Antique White/Waxed Finish



WTI10132  
Star/Cross Border, 2 3/8 x8"  
OHS-Golden White/Waxed Finish



WTI10094  
Octagon, 4 x4"  
OHS-Traditional/Waxed Finish



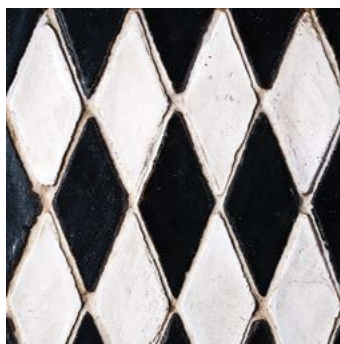
WTI10071  
Star and Cross, 4 x4"  
VTG-Old World/Waxed Finish



WTI10074  
Picket, 5 x17"  
OHS-Antique White/Waxed Finish



WTI10056  
Picket, 4 x8"  
VTG-Golden White/Waxed Finish



WTI10020  
Rhombus, 2 x5 1/2"  
OHS-Carbon Black & Antique White  
Waxed Finish



WTI10030  
Square, 2 1/2 x2 1/2"  
VTG-Antique White Waxed Finish





STOCK IMAGE: WT110150 12" ENGRAVED MEDIEVAL DOOR CO 55 OLY WORLD EE-55-OW









COUNTRY FLOORS®





# COUNTRY FLOORS®

## NEW YORK

Headquarters and Showroom  
15 East 16th Street  
New York, NY 10003  
Phone: (212) 627-8300  
Fax: (212) 242-1604

## LOS ANGELES

Country Floors  
8735 Melrose Avenue  
Los Angeles, CA 90069  
Phone: (310) 657-0510  
Fax: (310) 657-2172

## SAN FRANCISCO

San Francisco Design Center  
Two Henry Adams St Suite 100  
San Francisco, CA 94103  
Phone: (415) 241-0500  
Fax: (415) 241-0600

## FAIRFAX

Represented by: Marble Systems  
2737 Dorr Avenue  
Fairfax, VA 22031  
Phone: (703) 204 1818  
Fax: (703) 204 1888

## POMPANO BEACH

Represented by: Marble Systems  
2010 West Atlantic Blvd.,  
Pompano Beach, Florida 33069  
Phone: (954) 979-9530  
Fax: (954) 979-9531

## MIAMI

Represented by: Marble Systems  
2920 NW 79th Avenue,  
Doral FL 33122  
Phone: (786) 220-5820  
Fax: (305) 463-9851

## BETHESDA

Country Floors  
6931 Arlington Rd Suite C2,  
Bethesda, MD 20814  
Phone: (301) 913-9113

## ANAHEIM

Represented by: Marble Systems  
2111 E Howell Ave,  
Anaheim, CA 92806  
Phone: (714) 525 8910  
Fax: (714) 525 8911

## CANADA

Please contact our  
New York Showroom.  
Phone: (212) 627-8300  
Fax: (212) 242-1604

## PUERTO RICO

Represented by: Marble Systems  
279 José De Diego Ave.  
San Juan, PR 00920  
Phone: (787) 793-5642  
Fax: (787) 774-823

## NEW JERSEY

Represented by: Marble Systems  
610 Washington Ave  
Carlstadt, NJ 07072  
Phone: (201) 507 0111  
Fax: (201) 507 0888

## CHANTILLY

Represented by: Marble Systems  
25383 Pleasant Valley Rd. Chan-  
tilly, VA 20152  
Phone: (703) 337 1500  
Fax: (703) 337 1501