





taza multifinish allure light & snow white & indigo ottoman textile 3 - 8 8/32"x10 1/16"x3/8"

Taos Waterjet Collection

Known for its incredible pottery and beautiful hand loomed rugs, our Taos Waterjet Collection offers 5 organic patterns mimicking the nature, textiles, and colors of this magical place.

The TAOS COLLECTION is; *Available by template or “made to Measure” on a special order basis. *Fully Customizable from our expansive collection of luxury stones. *Suitable for interior residential & commercial wall or floor applications.

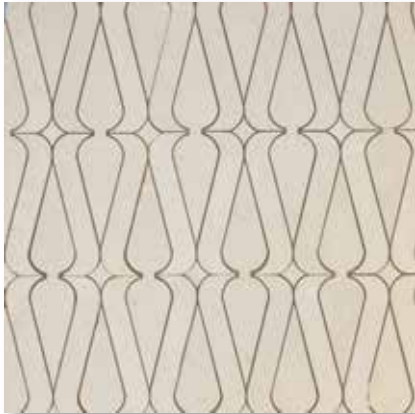
Usage

- | | |
|---|---|
| <input checked="" type="checkbox"/> Bathroom Floors/Walls | <input checked="" type="checkbox"/> Residential Interior Floors |
| <input checked="" type="checkbox"/> Commercial Interior Floor | <input checked="" type="checkbox"/> Residential Interior Walls |
| <input checked="" type="checkbox"/> Commercial Interior Walls | <input checked="" type="checkbox"/> Shower Floors |
| <input type="checkbox"/> Residential Countertops | <input checked="" type="checkbox"/> Shower Walls |



white carrara, avenza, black multi finish linon marble waterjet decos

Floor / Wall Tiles



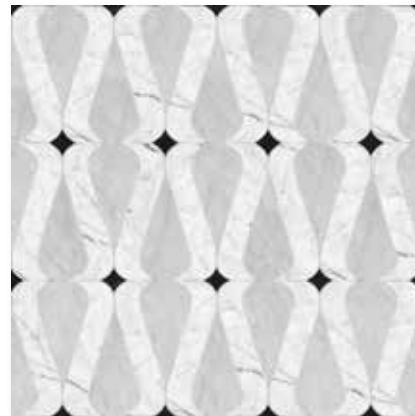
XTA02001 *S.O.
linon
champagne honed
8 1/4"x12 11/32"x3/8"
*tier 1: XTA02005 - *(S.O.)
*tier 2: XTA02002 - *(S.O.)
*tier 3: XTA02003 - *(S.O.)
*tier 4: XTA02004 - *(S.O.)
0.70 sqft/pcs



XTA02010 *S.O.
linon
multifinish
allure light & avenza & indigo
ottoman textile 3
8 1/4"x12 11/32"x3/8"
0.70 sqft/pcs



XTA02011 *S.O.
linon
multifinish
silver clouds & snow white & black
8 1/4"x12 11/32"x3/8"
0.70 sqft/pcs



XTA02012 *S.O.
linon
multifinish
white carrara & avenza & black
8 1/4"x12 11/32"x3/8"
0.70 sqft/pcs

*S.O. - Special Order. Lead times may vary 2-4 weeks on product.
For a list of Tier options, please refer to our Customization Program at www.marblesystems.com/custom-patterns/.

Floor / Wall Tiles



XTA01001 *S.O.
taza
champagne polished
8 8/32"x10 1/16"x3/8"
*tier 1: XTA01005 - *(S.O.)
*tier 2: XTA01002 - *(S.O.)
*tier 3: XTA01003 - *(S.O.)
*tier 4: XTA01004 - *(S.O.)
0.57 sqft/pcs



XTA01008 *S.O.
taza
multifinish
calacatta gold & snow white & gold ottoman textile 2
8 8/32"x10 1/16"x3/8"
0.57 sqft/pcs



XTA01009 *S.O.
taza
multifinish
haisha & black & snow white
8 8/32"x10 1/16"x3/8"
0.57 sqft/pcs



XTA01010 *S.O.
taza
multifinish
allure light & snow white & indigo ottoman textile 3
8 8/32"x10 1/16"x3/8"
0.57 sqft/pcs

*S.O. - Special Order. Lead times may vary 2-4 weeks on product.
For a list of Tier options, please refer to our Customization Program at www.marblesystems.com/custom-patterns/.

Floor / Wall Tiles



XTA03001 *S.O.
tappeti
champagne polished
8"x10 21/32"x3/8"
*tier 1: XTA03005 - *(S.O.)
*tier 2: XTA03002 - *(S.O.)
*tier 3: XTA03003 - *(S.O.)
*tier 4: XTA03004 - *(S.O.)
0.58 sqft/pcs



XTA03008 *S.O.
tappeti
multifinish
diana royal & snow white
8"x10 21/32"x3/8"
0.58 sqft/pcs



XTA03009 *S.O.
tappeti
multifinish
silver shadow & aspen white
8"x10 21/32"x3/8"
0.58 sqft/pcs



XTA03010 *S.O.
tappeti
multifinish
bianco dolomiti & britannia
8"x10 21/32"x3/8"
0.58 sqft/pcs

*S.O. - Special Order. Lead times may vary 2-4 weeks on product.
For a list of Tier options, please refer to our Customization Program at www.marblesystems.com/custom-patterns/.

Floor / Wall Tiles



XTA04001 *S.O.
beni
champagne polished
9"x9"x3/8"
*tier 1: XTA04005 - *(S.O.)
*tier 2: XTA04002 - *(S.O.)
*tier 3: XTA04003 - *(S.O.)
*tier 4: XTA04004 - *(S.O.)
0.56 sqft/pcs



XTA04007 *S.O.
beni
multifinish
gold ottoman textile 2 & glacier
9"x9"x3/8"
0.56 sqft/pcs



XTA04008 *S.O.
beni
multifinish
bianco dolomiti & diana royal
9"x9"x3/8"
0.56 sqft/pcs



XTA04009 *S.O.
beni
multifinish
paradise & diana royal
9"x9"x3/8"
0.56 sqft/pcs

*S.O. - Special Order. Lead times may vary 2-4 weeks on product.
For a list of Tier options, please refer to our Customization Program at www.marblesystems.com/custom-patterns/.

Floor / Wall Tiles



XTA05001 *S.O.
rya
champagne polished - honed
8 7/16"x11 1/4"x3/8"
*tier 1: XTA05005 - *(S.O.)
*tier 2: XTA05002 - *(S.O.)
*tier 3: XTA05003 - *(S.O.)
*tier 4: XTA05004 - *(S.O.)
0.65 sqft/pcs



XTA05007 *S.O.
rya
multifinish
diana royal & aspen white
8 7/16"x11 1/4"x3/8"
0.65 sqft/pcs



XTA05008 *S.O.
rya
multifinish
silver shadow & aspen white
8 7/16"x11 1/4"x3/8"
0.65 sqft/pcs

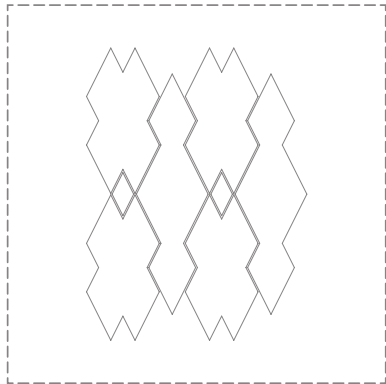


XTA05009 *S.O.
rya
multifinish
aspen white & carrara
8 7/16"x11 1/4"x3/8"
0.65 sqft/pcs

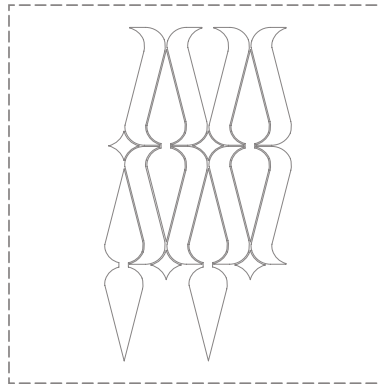
*S.O. - Special Order. Lead times may vary 2-4 weeks on product.
For a list of Tier options, please refer to our Customization Program at www.marblesystems.com/custom-patterns/.



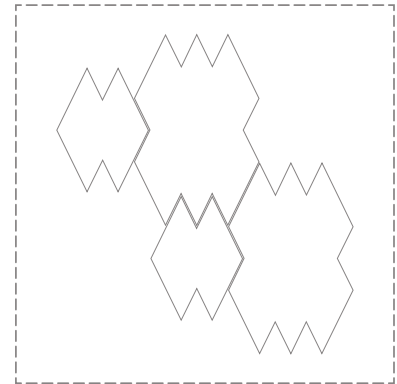
Technical Drawings



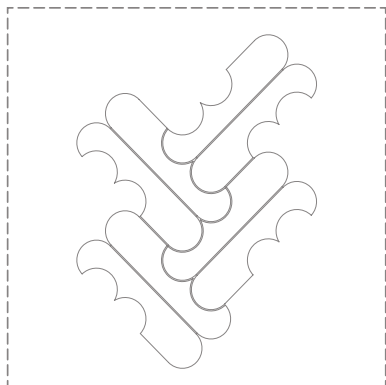
taza
8 8/32"x10 1/16"x3/8"
coverage: 0.57 sqft/pcs



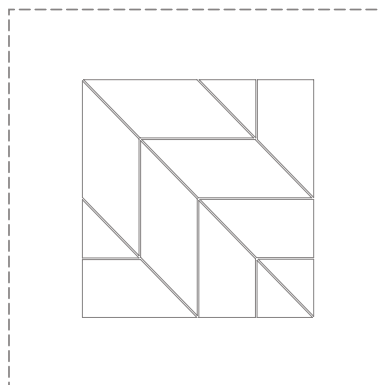
linon
8 1/4"x12 11/32"x3/8"
coverage: 0.70 sqft/pcs



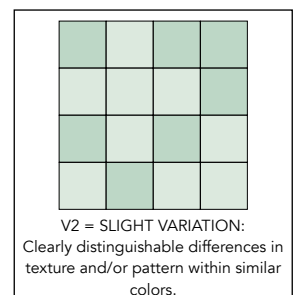
tappeti
8"x10 21/32"x3/8"
coverage: 0.58 sqft/pcs



rya
8 7/16"x11 1/4"x3/8"
coverage: 0.65 sqft/pcs



beni
9"x9"x3/8"
coverage: 0.56 sqft/pcs



*All patterns shown for Taos are all customizable.
Please refer to our Customization Program at www.marblesystems.com/custom-patterns/.



COUNTRY FLOORS

countryfloors.com

COUNTRY FLOORS

NEW YORK

15 EAST 16TH STREET NEW YORK, NY 10003 PHONE : (212) 627 8300 FAX : (212) 242 1604

LOS ANGELES

8735 MELROSE AVENUE LOS ANGELES, CA 90069 PHONE : (310) 657 0510 FAX : (310) 657 2172

SAN FRANCISCO

TWO HENRY ADAMS STREET ST. 100 SAN FRANCISCO, CA 94103 PHONE : (415) 241 0500 FAX : (415) 241 0600

MARBLE SYSTEMS

MID-ATLANTIC & MID-WEST DIVISION

2737 DORR AVENUE FAIRFAX, VA 22031 PHONE : 703 226 1590 FAX : 703 226 1591

NORTHEAST DIVISION

610 WASHINGTON AVE CARLSTADT, NJ 07072 PHONE : 201 507 0111 FAX : 201 507 0888

WEST COAST DIVISION

2111 E HOWELL AVE, ANAHEIM, CA 92806 PHONE : 714 525 8910 FAX : 714 525 8911

MIAMI & CARIBBEAN DIVISION

2716 PONCE DE LEON BLVD. CORAL, GABLES, FL 33134 PHONE : 305 463 9850 FAX : 305 463 9851

SOUTHEAST DIVISION

2010 WEST ATLANTIC BLVD. POMPANO BEACH, FL 33069

PHONE : 954 979 9530 FAX : 954 979 9531

PUERTO RICO DIVISION

279 JOSÉ DE DIEGO AVE. SAN JUAN, PR 00920 PHONE : 787 793 5642 FAX : 787 774 8238

DOMINICAN REPUBLIC

CALLE DR MANUEL EMILIO PERDOMO #33, LOCAL 3 ENSANCHE NACO

SANTO DOMINGO, REPÚBLICA DOMINICANA PHONE: 809 692 2391

MANUFACTURING FACILITIES

CHANTILLY

25383 PLEASANT VALLEY ROAD, CHANTILLY, VA 20152 PHONE : 703 337 1500 FAX: 703 337 1501

MGM

ORGANIZE SANAYI BOLGESI 1. CD. 12. SK. NO: 8 AFYONKARAHISAR/TURKEY PHONE : +90 541 472 2205

TUREKS

ORGANIZE SANAYI BOLGESI 1. CD. 5. SK. AFYONKARAHISAR/TURKEY PHONE : +90 272 221 1600



CountryFloors



countryfloors1



countryfloors



countryfloors



country_floors



marblesystemsinc



marblesystems1



marblesystems1



marblesystems



marblesystems